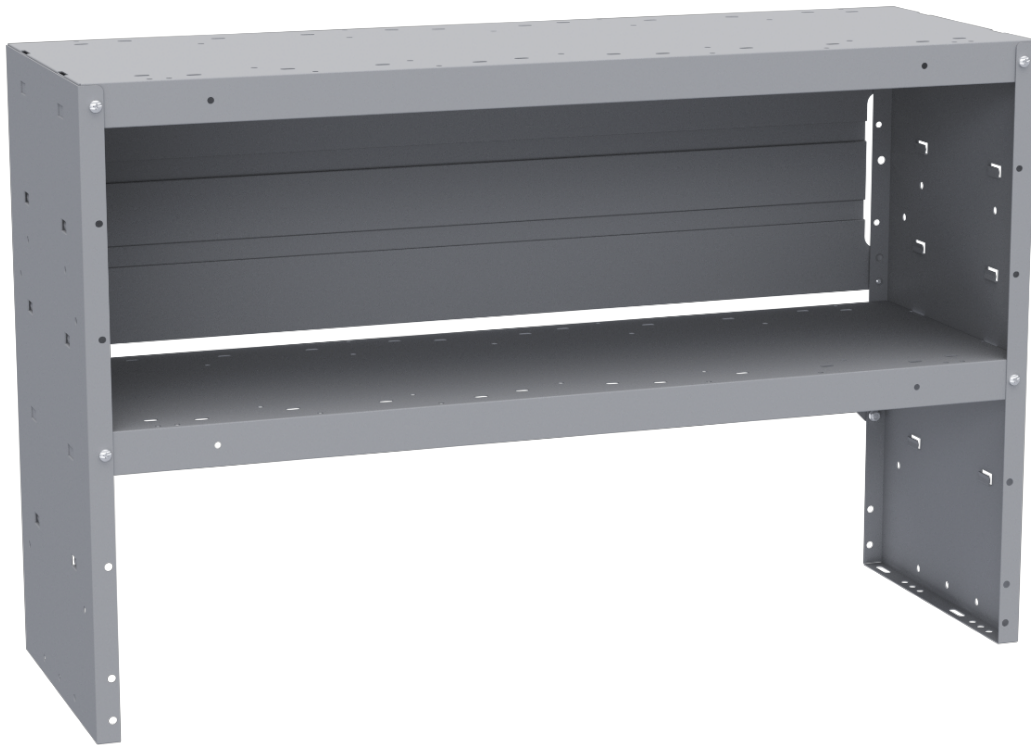


## **SHELF UNIT - 42" W X 27" H X 14" D**

---

**Part # : 48422**



## **Shelf Unit - 42" W x 27" H x 14" D**

*The Holman Shelving System is one of the most durable and flexible shelving systems available on the market.*

### **Features**

- Heavy Lance Support Technology

- Adjustable Shelf Lips
- Contoured top design
- Shelving accessories & add-ons

## Vehicle Fit

Vans

## SHELVING BUILT TO LAST



## Strong, Quiet, Secure

With 16 gauge side panels and 18 gauge shelving, Holman shelves are built to take a beating. With a number of strength enhancing features, these shelves can withstand power tools, heavy parts and just about anything you can throw at them. Our folded steel shelf lip is the strongest in the industry.

With gusseted leg supports and weldnut attachments, we are so confident that every shelf comes with a structural

warranty. We've designed our backing plates to be rattle free keeping the inside of your van quiet. And our strong mounting hardware you are worry free from our shelves ever breaking free.

- **Stronger** - Gusseted end panels, weldnut attachments and thicker 16-gauge side panels
- **Quieter** - Improved back panels\* reduce noise
- **More secure** - Stronger mount brackets and angle braces

*\*not included on all shelving units*