

Holman

Covered Service Body Rack Measure and Fit Guide



Holman
Rancho Cordova, CA 95742
800-343-7486
InstallationSupport@Holman.com

PLEASE READ ALL INSTRUCTIONS AND WARNINGS PRIOR TO ASSEMBLING, INSTALLING, AND USING ANY PRODUCT.

Warning



Always check for wires, fuel tanks and lines, brake lines and other important vehicle functionality items prior to drilling and installing all products.



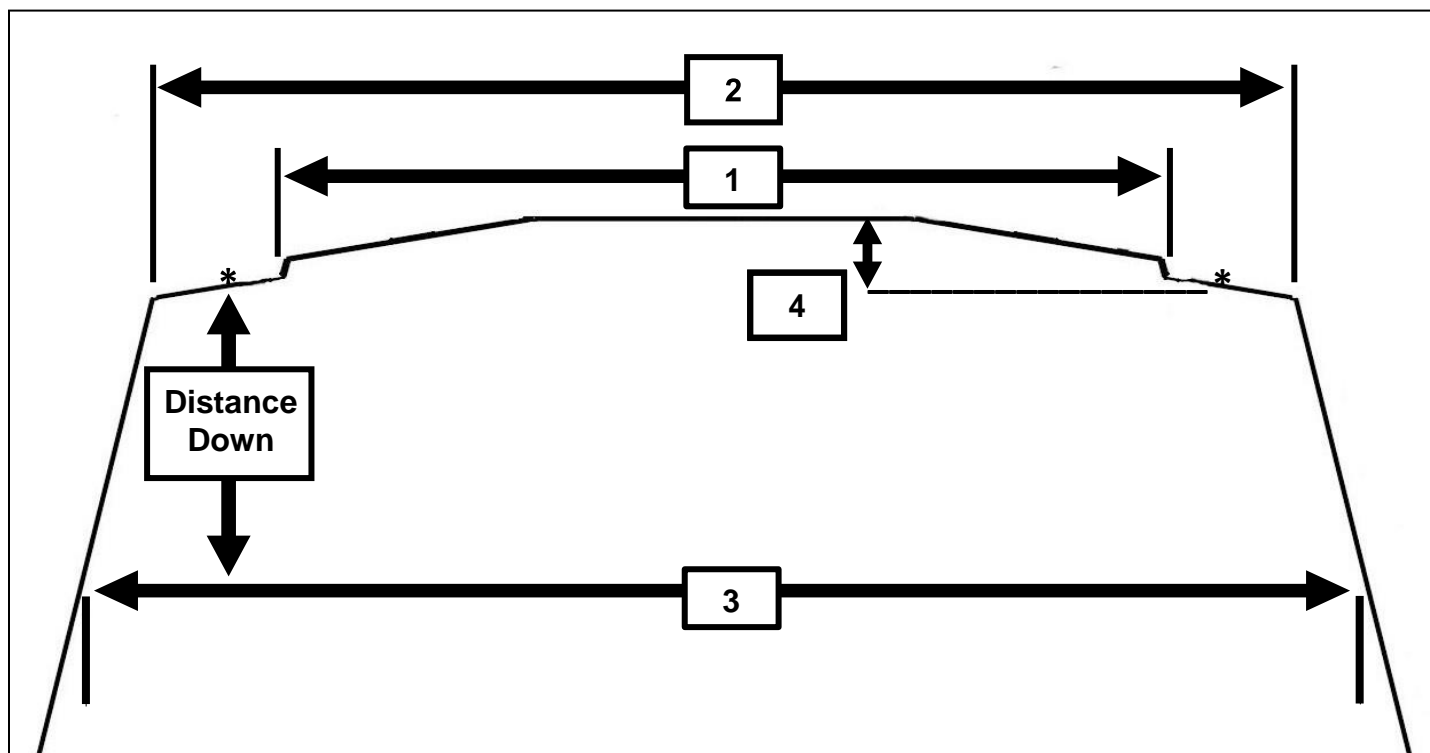
DO NOT EXCEED MANUFACTURERS WEIGHT CAPACITY FOR ROOF.

Tools Needed

Tape Measure	Ladder
--------------	--------

Before You Begin

- Always determine your installation locations prior to performing any work.
 - ENSURE SAFETY WHILE INSTALLING OR DRILLING INTO VEHICLE.
 - Be sure to put sealant around all threads entering cargo area and between the rubber spacer and roof of vehicle to prevent water from leaking into cargo area.
-



Record Measure Here ↓	Refer to diagram above for reference.									
1 =	Measure side-to-side width of inside of raised roof section.									
2 =	Measure side-to-side width of outside edge of roof at outer corners.									
	Using the two measurements, estimate installation location of rack mounting feet.									
3 =	At that following distance down from installation location, measure side-to-side width of outer edges of service body. <table><tr><th>Service Body</th><th>Distance Down to Measure</th></tr><tr><td>Low-Roof Covered Service Body (< 85" Tall)</td><td>17"</td></tr><tr><td>Mid-Roof Covered Service Body (85" - 95" Tall)</td><td>17"</td></tr><tr><td>High Roof Covered Service Body (> 95" Tall)</td><td>29"</td></tr></table>		Service Body	Distance Down to Measure	Low-Roof Covered Service Body (< 85" Tall)	17"	Mid-Roof Covered Service Body (85" - 95" Tall)	17"	High Roof Covered Service Body (> 95" Tall)	29"
Service Body	Distance Down to Measure									
Low-Roof Covered Service Body (< 85" Tall)	17"									
Mid-Roof Covered Service Body (85" - 95" Tall)	17"									
High Roof Covered Service Body (> 95" Tall)	29"									
4 =	Measure difference in height between top of crown to estimated installation location.									

	<p>Compare your measurements 1-4 to values A-D in the table on the next page to ensure rack will fit properly. Be sure your measurements are within the range specified.</p> <p>Measurement 1 < MIN Feet Hole-to-Hole Mounting Width (A)</p> <p>Measurement 2 > MAX Feet Hole-to-Hole Mounting Width (B)</p> <p>Measurement 2 < MAX Body Width at Mount (C)</p> <p>Measurement 3 < MAX Body Width at Bottom of Dropped Pan at Distance (D)</p> <p>Measurement 4 < Maximum Allowable Crown Height of 6-1/4".</p>
--	--

Rack Reference Table

Refer to Rack Reference Diagrams on next page for dimension illustration.

Rack	Mount Kit	MIN Feet Hole-to-Hole Mounting Width	MAX Feet Hole-to-Hole Mounting Width		MAX Body Width at Mount	MAX Body Width at Bottom of Dropped Pan
		A	B	B-B*	C	D
LOW-ROOF COVERED SERVICE BODY (< 85" TALL)						
4092L▲	4A959	54-1/4"	60-1/8"	63-1/8"	72-3/4"	83"
4A93L◆	4A959	54-1/4"	59-5/8"	62-5/8"	72-3/4"	86"
WIDE-BODY LOW-ROOF COVERED SERVICE BODY (< 85" TALL)						
47953▲	Incl.	67-5/16"	77-1/2"	80-1/2"	85"	95-3/16"
MID-ROOF COVERED SERVICE BODY (85" - 95" TALL)						
4097M▲	4A959	54-1/4"	60-1/8"	63-1/8"	72-3/4"	83"
4A93M◆	4A959	54-1/4"	59-5/8"	62-5/8"	72-3/4"	86"
WIDE-BODY MID-ROOF COVERED SERVICE BODY (85" - 95" TALL)						
47973▲	Incl.	67-5/16"	77-1/2"	80-1/2"	85"	95-3/16"
HIGH ROOF COVERED SERVICE BODY (> 95" TALL)						
4099H▲	4A959	53 13/16"	57-1/2"	60-1/2"	70-3/4"	85-3/8"
4A99H◆	4A959	55-3/16"	59-5/8"	62-5/8"	70-3/4"	81 7/8"
WIDE-BODY HIGH ROOF COVERED SERVICE BODY (> 95" TALL)						
47993▲	Incl.	68"	77-1/2"	80-1/2"	85"	99-3/4"

▲ = Steel Rack

◆ = Aluminum Rack

* = Mounting feet to bow using only 2 bolts per foot (1 each side) instead of 4 bolts per foot increases maximum feet hole-to-hole mounting width by 3".

Rack Reference Diagrams

