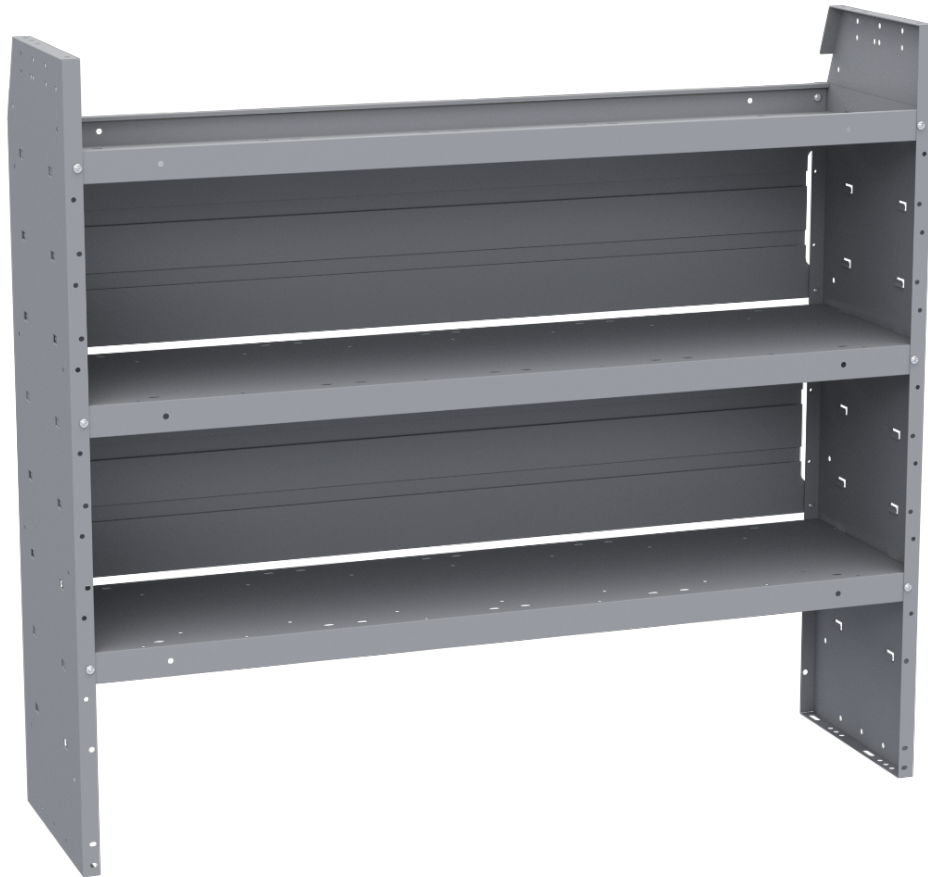


SHELF UNIT - 52" W X 46" H X 14" D

Part # : 48520



52" W x 46" H x 14" D Shelf Unit

The Holman Shelving System is one of the most durable and flexible shelving systems available on the market.

Features

- Heavy Lance Support Technology
- Adjustable Shelf Lips
- Contoured top design

- Covered Steel Back Panels
- Shelving accessories & addons

Compatible Items

- #48190 - 10" L Shelf Lip
- #48210 - 10" W Plastic Bin Module
- #48250 - 10" W Plastic Small Parts Bin Module

Vehicle Fit

Ford Transit
Ram ProMaster

Nissan NV
Mercedes Sprinter

GM Chevy Express
GM Savana

SHELVING BUILT TO LAST



Strong, Quiet, Secure

With 16 gauge side panels and 18 gauge shelving, Holman shelves are built to take a beating. With a number of strength enhancing features, these shelves can withstand power tools, heavy parts and just about anything you can throw at them. Our folded steel shelf lip is the strongest in the industry.

With gusseted leg supports and weld-nut attachments, we are so confident that every shelf comes with a structural warranty. We've designed our backing plates to be rattle free keeping the inside of your van quiet. And our strong mounting hardware you are worry free from our shelves ever breaking free.

- **Stronger** - Gusseted end panels, weld-nut attachments and thicker 16-gauge side panels
- **Quieter** - Improved back panels reduce noise
- **More secure** - Stronger mount brackets and angle braces